

Hall Cross Academy



TRANSITION

Welcome to
Hall Cross Academy



A Member of
Exceed Learning Partnership
• EVERY CHILD • EVERY CHANCE • EVERY DAY •

Enjoying excellence every day



WELCOME FROM MR SWAIN



Mr S Swain
Principal

L I T E R A T E
C R E A T I V E
T E A M P L A Y E R
R E S P E C T F U L
I N D E P E N D E N T
M O T I V A T E D
P R O U D

Congratulations on securing your place at Hall Cross Academy. Once again, we are oversubscribed with large numbers on the waiting list. We are delighted that you have chosen us as the school to help your child develop into an adult and we look forward to meeting your son or daughter very soon.

This area of our website has been designed to contain all the information needed to ensure a smooth transition from primary school to Hall Cross Academy.

CARE



Community



Achievement



Equality



Respect

British Values



KEY STAFF

Below is a list of key staff that you may need to know during the transition process. You can use the contact buttons next to their name to contact them directly or use the Contact Us section of our website to send a general enquiry.



Mr S Swain
Principal



Mr P Tyrer
Learner Experience
Key Stage 3



Mrs S Forsythe
Senior Vice Principal
Quality of Education



Mrs N Laszkowicz
SENCO



Mrs G Massarella-Burton
Associate Vice Principal
Student Experience



Mr P Wymer
Key Stage 3
Learner Progress



Mr J Mirfin
Associate Principal
Student Experience



Mrs K Briggs
Head of Year 7



JOINING HALL CROSS ACADEMY

Moving to secondary school is an exciting, yet challenging, experience for children and their parents.

To help with this transition, we have a number of things in place:

- Links between Headteachers and key staff within our Family of Schools for planning the calendar of transition activities.
- Sharing successful teaching strategies between Hall Cross and Primary Schools to ensure good progression into, and through, Y7.
- An Open Evening in October for you to meet the Leadership Team and teachers, visit departments and sample activities.
- Induction days during the year for all year 6 students who will start with us in September
- Our Year 7 year manager, coupled with the SENDCO visit all primary schools from which we receive students. This ensures we have all the relevant academic data, alongside other important information for all students prior to their arrival.
- Children with special needs or particular requirements are offered more extensive support with transition and induction. Please contact the academy if you would like further advice.
- There is an opportunity for 1:1 visits for vulnerable, anxious students

The pupil admission number for each year group is 310
Hall Cross Academy is oversubscribed annually. When applying please put us as first choice to avoid disappointment.



GETTING TO AND FROM SCHOOL

The Academy is well served by public transport, with buses timetabled regularly along Bawtry Road and on Stoops Lane to the rear of the Academy.

Parents are welcome to drive their children to Hall Cross Lower School Campus although access to the Academy does become congested particularly at the end of the school day.

In the interests of safety for all our students, our gates are closed to non-staff members, during the school day and parents are unable to drive their cars onto Academy premises. We recommend parents drop off and pick up students at the Lakeside entrance from where students can walk on the footpath to the playground.

Pupils are welcome to cycle to school. Student safety is a top priority so please ensure your child wears a helmet, maintains their bike in good condition, and equips their bike with lights.

There are bike racks on the Lower School campus and it is crucial that students lock their bikes in the designated areas. Please be aware that the school cannot assume responsibility for the security of bicycles left on school grounds. Locking bikes is essential to protect them from theft or damage.

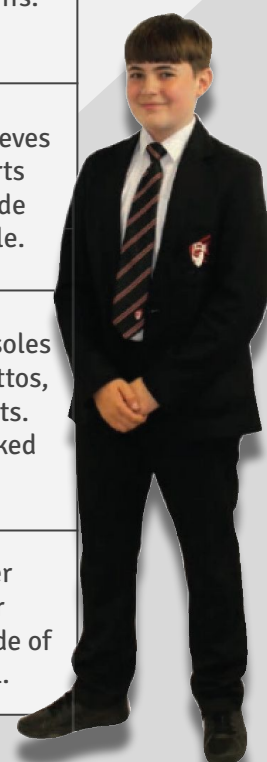
For safety, students are not permitted to ride their bikes on the school site.

SCHOOL DAY

Timings of the school day	Lessons
08:35 - 09:50	Period 1
09:50 - 10:55	Period 2
10:55 - 11:20	Break
11:25 - 12:25	Period 3
12:25 - 13:30	Period 4
13:30 - 14:10	Lunch
14:10 - 15:10	Period 5

WHAT WILL I WEAR - School Uniform

Uniform Item	Compulsory or optional?	Standards - details	Further Clarification
Academy blazer with embroidered school badge	Compulsory	Must be standard school blazer	Purchased from Cliffs in store
Skirt or	Compulsory	Pleated (no A-line skirt) and must be worn knee length with tights. Must have the Hall Cross logo visible. Students must wear tights and not knee length socks if they choose to wear a skirt	Purchased from Cliffs in store
Trousers		Plain black school trousers matching those available from school supplier. Logo trousers are available	No jeans, brushed denim, patch pockets, hipsters, lycra, jeggings, leggings or drainpipe/skinny fit. No decorative zips or frills
Jumper	Optional	Plain black embroidered with Academy logo	Purchased from Cliffs. To be worn under blazers (not as a substitute for a blazer)
Academy Tie	Compulsory	Clip on tie (Year 7 and new students will be required to purchase the new black and red tie)	Purchased directly from Cliffs.
White Shirt	Compulsory	With collar and sleeves (long or short) and top button that fastens fully.	Must be tucked in. Short sleeves are acceptable. Fitted shirts designed to be worn outside trousers are not acceptable.
Footwear	Compulsory	Plain black. Hard wearing, closed-toed and suitable for weather conditions. Plain black trainers are acceptable	No coloured logos, stripes, soles or flashes. No sandals, stilettos, flip-flops or Ugg-style boots. Trousers should not be tucked into boots at any time.
Outdoor Coat	Optional	Must fit over blazer and should be suitable for cold/wet weather.	No hoodies (under or over blazer), tracksuit tops or sweatshirts. No zip tops made of sweatshirt-type material.





WHAT WILL I WEAR - PE Kit

Uniform Item	Compulsory or optional?	Standards - details	Further Clarification
Sports Hoodie or ¼ Zip Top	Compulsory	Black with red trim - with Academy logo	*Please note you have a choice between Sports Hoodie or ¼ Zip Top Purchased from Cliffs in store.
Sports Shirt	Compulsory	Red with black trim - with Academy logo	
Shorts	Compulsory	Black - with Academy logo	
Waterproof sports jacket	Optional	Black - with Academy logo	
Jogging bottoms/ sports leggings	Compulsory	Black	
Socks	Compulsory	Black sports socks OR white ankle socks	
Footwear	Compulsory	Sports trainers - any colour with laces	Available from sports retailers.
Swimming kit	Optional	One piece swimming costume or shorts/ trunks suitable for swimming	
School Bag	Compulsory	A school bag must be brought to school everyday. The following will need to include: Black Pen, Pencil, Ruler, Green Pen. Including a Scientific Calculator.	

Please note when purchasing PE kit that students will be expected to take part in two hours of PE per week. This involves a majority of the lessons taking place outdoors during the winter term so we ask that you send your children to school dressed appropriately for detrimental weather conditions.

HEAR FROM OUR STUDENTS

I absolutely love it here at Hall Cross! All the teachers are so kind and welcoming. They are always there for us when we need support or guidance. They always make lessons fun and engaging. Also, it is very easy to make friends because everybody is so kind. There are lots of fun extra-curricular activities to participate in at Hall Cross. You are sure to find something that suits you!



Natalie

I love it at Hall Cross Academy. When I joined I was a little worried because I was the only student from my primary school. I shouldn't have worried! I've met loads of people and made lots of new friends. My favourite lesson is games. I have loved learning about different sports and how to play them. I am really happy here at Hall Cross and i'm glad I came here.



Nate

I like Hall Cross because we get to do different classes for different subjects. If you have a problem or are upset about something there is always a member of staff to help you and give you advice. The teachers are fun and make lessons really interesting, they help you if you are struggling so don't be afraid to ask for help! My favourite subject is Baccalaureate (also known as Base) because it is fun and you learn loads. You are in your Base lessons for 2 and a half days a week so you really get to know your teachers and your classmates and they know you too!



Zara

HEAR FROM OUR STUDENTS



My first year at Hall Cross has been nothing but full of good surprises. As we say at home, I made the right choice coming here. The people I have met are fantastic, and I love the teachers. The wide options and variety of clubs is spectacular and sometimes I am upset to miss one, as I have another at the same time! The staff and teachers here are supportive and I know that they - and my friends - are always there for me if I need them.

Maddy

I have loved Hall Cross Academy so far. I love the curriculum and how we are taught. The teachers are nice and the lessons are always challenging. I have made lots of new friends by taking part in a variety of activities. I have played sports like basketball, rugby, football and badminton. Lunch is good! We have lots of choice, we can choose from a hot meal or pasta or sandwiches.

Ethan



CURRICULUM KEY STAGE 3

Curriculum Intent

The Key Stage 3 curriculum at Hall Cross provides the foundation on which future academic success can be built. The initial phase of the KS3 curriculum is to provide an effective transition from KS2. There is a clear understanding across the key stage, and across the academy as a whole, of the fact that students who feel safe and supported in their learning environment are more engaged and likely to fully achieve their potential.

Students graduate from KS3 following a comprehensive options process designed to ensure they move into subjects that best suit their skills, strengths and interests. This is secured through one to one meetings with members of SLT, ensuring students are ready for the challenges of KS4

Key Stage Three			
	Year 7	Year 8	Year 9
	Hours	Hours	Hours
English	4	4	4
Maths	4	4	4
Science	3	3	3
ADT	2	2	2
Geography	2	2	2
History	2	2	2
IT	1	1	1
Life (PSHE)	1	1	1
MFL	2	2	2
Performing Arts	1	2	2
Physical Education	2	2	2
Reading	1		
Total	25	25	25

SCHOOL MEALS

Food and drinks are available for all students attending the Academy before school, at morning break and lunch.

Students can choose from a healthy range of hot and cold food, provided by Mellors Catering Services. The cost of a meal deal at lunch is £2.90 (as at May 2025). A meal deal includes a hot meal and dessert *or* bottle of water. Payment for school meals should be made online and in advance via ParentPay.

A biometric (finger print) recognition system is used by the Academy for students to purchase their food. Your written consent for this will be requested. Further information can be found in our Protection of Biometric Information of Children Policy, available on our website.

To ensure the safety of our students we insist that students remain in the school premises at lunchtime; they are free to either eat a school meal or alternatively bring a packed lunch.



PARENT PAY

Hall Cross Academy no longer routinely accept cash and cheque payments, aiming to make the school a cash-free environment.

Parentpay offers you the freedom to make payments whenever and wherever you like, 24 hours a day, 7 days a week, safe in the knowledge that the technology used is of the highest internet security available.



Parents are each given a secure online account, activated using a unique username and password.

For parents without internet access payments can be made by PayPoint, located in local stores. A PayPoint card can be requested from the Finance Office, at the Upper School Campus.

IS YOUR CHILD ENTITLED TO FREE SCHOOL MEALS?

Did you know that you may be able to support your child at Hall Cross Academy by simply registering your eligibility to claim free school meals?

How will I be helping to support my school?

Hall cross Academy can claim additional funding from Government according to the number of children attending our school eligible for free school meals. This additional funding is called the Pupil Premium grant and even if your child does not want their free school meal, the additional funding it attracts can benefit them in other ways. For example the funding can be used to support school trips, provide extra resources and employ more staff.

Can anyone register for free school meals?

Your child will be eligible for free school meals if you are receiving one of the following benefits or support:

- **Income Support**
- **Income-based Jobseeker's Allowance**
- **Income-related Employment and Support Allowance**
- **Child Tax Credit** but not Working Tax Credit and your annual income is below £16,190 (as worked out by HM Revenue & Customs)
- **Guarantee element of State Pension Credit**
- **Support under part VI of the Immigration and Asylum Act 1999**
- **Parents receiving Working Tax Credit** for four weeks after their employment finishes are entitled to free school meals during that period. This also applies to parents who start working less than 16 hours per week.

All Year 6 students that are eligible for Free School Meals must reapply to be eligible in Year 7.

This entitlement no longer remains with the child as they move from Primary to Secondary school.

There is no entitlement for free school meals if the parent receives Working Tax Credit on a regular basis.



Apply for free school meals

If you meet the criteria, an online request, normally by the parent or guardian of the child, has to be made before the council can provide free school meals.

Please see the links below:

Hall Cross web page link: <https://hallcrossacademy.co.uk/about-the-academy/pupil-premium/>

DMBC application link: <https://www.doncaster.gov.uk/services/schools/free-school-meals>

Even if you do not want your child to receive a free school meal we would ask you to apply, so that your child's school receives as much funding as possible.

If you need any assistance completing the form please contact the school.

Tel: **01302 320626**

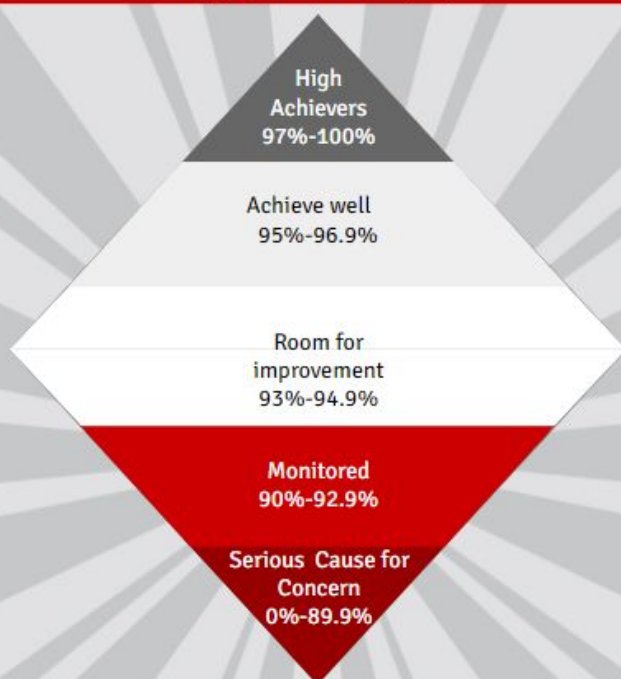
ATTENDANCE

Good attendance means being in school at least 97% of the time or 185-190 days. Did you know? A two week holiday in term time means that the highest attendance you can ever achieve is 94.5%

Rewards are received each week of the school year for good attendance! 97% and above is classed as good attendance at Hall Cross Academy.

ATTENDANCE DIAMOND

Enjoying excellence every day



Attendance Groups

Group	Description
Grey Group	Best chance of academic success
Light Grey Group	Risk of underachievement
White Group	Serious risk of underachievement
Red Group	Severe risk of underachievement
Burgundy Group	Extreme risk- Court Action

ATTENDANCE MATTERS

100%	0 Days	0 Lessons Missed
99%	1 Day	5 Lessons Missed
98%	3 Days	15 Lessons Missed
97 %	1 Week	25 Lessons Missed
96 %	1.5 Weeks	35 Lessons Missed
94%	2 Weeks	50 Lessons Missed
93%	2.5 Weeks	65 Lessons Missed
92%	3 Weeks	75 Lessons Missed
90%	3.5 Weeks	90 Lessons Missed

Enjoying excellence every day

**MAXIMISE YOUR POTENTIAL.
ATTEND SCHOOL EVERY DAY.**

If your child is late or taken ill, please telephone the school attendance team on each day of their illness by 08:30 on:

01302 320 626 ext.number 244 or 202.

Failure to do this will result in communication from the attendance team, which may include a home visit, to establish the whereabouts of your child.

EXTRA-CURRICULAR ACTIVITIES

Hall Cross Academy aims to create an environment where learning outside the classroom is valued by students, and is seen as an integral part of their academic success and development as young adults.

The Academy has an extensive programme of extracurricular activities offered by every department to enrich the academic curriculum offer.

Our well-established sporting record for both girls and boys is excellent, and provides opportunities for participation from the recreational to national representation. Many of our students also choose to participate in Sports Leadership activities with younger students.

Our duke of Edinburgh programme, now in its ninth year, is highly popular and oversubscribed.

The Performing Arts Department offers many opportunities for music, dance and theatre and our in-house performing arts school ICAP (imagine, create, achieve, perform) hosts many performances throughout the year attracting talented young performers from across the region.

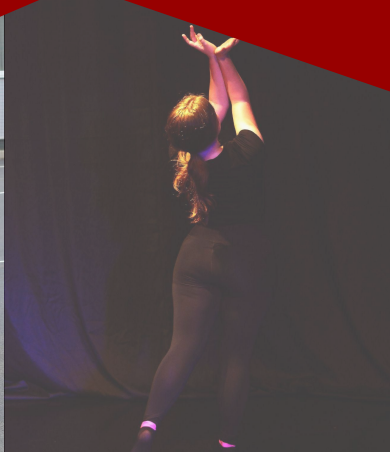
The Academy has been awarded The Gold Artsmark for its outstanding performing arts offer.

In addition, students can become involved in the wider life of the school as members of the student leadership team, as Key 4 prefects or Sixth Form ambassadors. There are also many opportunities throughout the school calendar to be active citizens by participating in local, national or international charity fundraising events and enterprise challenges.

The Library Resource Centres on both Academy Campuses are vibrant hubs of activity to suit all interests and help students get involved in school life.

We have excellent links with local and regional employers who help to secure high quality work placements and deliver careers education and guidance. Additionally established links with colleges and universities, promote high aspirations for our young people.

Finally, we continue to work in partnership with Doncaster and Bassetlaw Hospital Trust to spearhead innovative new programmes and promote employment pathways in Health.



SUPPORT AND INTERVENTION

Hall Cross Academy is committed to creating a well ordered, safe and secure environment for all our students, an environment built on mutual respect amongst students, and between students and staff.

This respect is fostered within a sympathetic and caring ethos where the needs of the student are put at the centre of all support and intervention.

Pastoral support is provided by Form Tutors and Year Managers led by a Phase Leader for Care and Guidance at Key Stage 3, 4, 5.

Academic support and intervention is provided in the Core subjects (English, Mathematics and Science) to ensure students are making the necessary progress.

Hall Cross is committed to raising standards of literacy throughout the Academy. At Key Stage 3 all students undertake reading tests throughout the year to ensure that progress is being made in this vital area of learning. All students in Y7 will have a reading hour with our dedicated reading team, alongside contextualised reading in Form Time linked to our weekly Care focus. Students who require additional support with reading will be offered one session of guided reading per week through the Accelerated Reader programme. Those who require further support will be offered reading intervention through our Thinking Reading programme. These students will attend three sessions per week.

The Inclusion Department is committed to meeting the needs of all students with Special Educational Needs and Disabilities (SEND) enabling them to achieve their potential; become confident individuals living fulfilling lives and make a successful transition into adulthood. Whether this be into employment, further or higher education or training. We aim to provide high quality support to students with a range of additional needs and those for whom English is an Additional Language. Support is provided by a team of experienced and dedicated teaching assistants (TAs) who work collaboratively with the class teachers and offer support to young people both inside and outside the classroom.

Students with SEND are involved in scripting their own 'One Page Profile', which describes their strengths and difficulties, and identifies ways that staff and other adults can support them. This co-planned document is shared with all teachers and support staff in school. All new students are screened for dyslexia in the first term which enables us to provide early intervention.

There is further support provided for students who are English speakers of other languages through our Inclusion Department. For those students for whom English is not their first language there are dedicated bases within the Academy where students can improve their English by studying in small groups. For relevant policies linked to SEND and Behaviour please visit the Academy website.

SAFEGUARDING

WELL-BEING AND SAFETY

We are all responsible for maintaining a mutually beneficial respectful and harmonious environment and our policies and procedures reflect this.

In particular, our policies for the following are of interest and are available on our website for you to read:

- Equality and Diversity
- Behaviour
- E-safety
- Anti-bullying
- Safeguarding



At Hall Cross Academy we are committed to supporting the safety and wellbeing of our children and young people and in line with the Keeping Children Safe in Education September 2022.

Safeguarding and promoting the welfare of children means:

- Protecting children from maltreatment
- Preventing impairment of children's mental and physical health or development
- Ensuring that children grow up with the provision of safe and effective care
- Taking action to enable all children to have the best outcomes

At Hall Cross we believe that:

- Safeguarding is everyone's responsibility
- Everyone has a role to play in identifying concerns
- The whole community has a responsibility to provide a safe environment

The Safeguarding team and Useful Websites
If you have any concerns about the safety or wellbeing of a student at Hall Cross Academy or any other child contact one of the safeguarding team below



Miss J Cox
Deputy Designated Safeguarding Lead



Mrs E Stables
Deputy Designated Safeguarding Lead



Mrs K Hargrave
Associate Senior Leader
Designated Safeguarding Lead



SEND

Special Educational Needs and Disabilities (SEND) Department

It is essential that students with Special Educational Needs and/or Disabilities have access to the right provision and support. At Hall Cross Academy we are committed to providing an aspirational curriculum designed to ensure all students are encouraged and supported to fulfil their full potential and maximise their enjoyment and success.

Our Approach to SEND

Each student, regardless of their ability, is entitled to a broad and balanced curriculum which is relevant to their educational needs. We aim to support students with SEND to become independent learners and develop confidence and self-esteem. We are proud of our inclusive ethos and work collaboratively with multi-agencies to provide the best possible outcomes for students.

Hall Cross Academy welcomes parents and carers to discuss student individual needs and strives to meet the individual needs as defined by the SEND Code of Practice (2015). Special Educational Needs are broadly categorised within the following areas:

- Cognition and Learning Difficulties
- Sensory and/or Physical Needs
- Communication and Interaction Needs
- Social, Emotional and Mental Health

In adhering to the requirements of the SEND Code of Practice 2015, we will ensure that every child with Special Educational Need(s) and/or Disability receives the most appropriate and bespoke package of support to meet their needs. We aim to identify SEND as early as possible to enable us to secure the best long term outcomes for the student and their family, making reasonable adjustments, in line with the Equality Act 2010.

Regular assessment allows us to identify pupils making less than expected progress given their age and individual circumstances.

Hall Cross Academy is an inclusive school, providing young people with quality first teaching and learning experiences within the mainstream classroom. All teachers are teachers of SEND using their “best endeavours” to support students with SEND. Teaching is differentiated in order to meet the needs of each student to ensure students are able to achieve objectives. Support is provided by the SENCO and the SEND team regarding the individual needs of SEND students and ideas for strategies to support are offered to ensure all students’ needs are met effectively within the classroom

The principles that underpin all in-class support activity at Hall Cross Academy are:

- Support is available for all students of all abilities who require it.
- Inclusion and student support are everyone’s responsibility. We recognise that success for every student is dependent on a through-school approach to inclusion.
- Any area of learning can be improved through targeted support. This includes: support for class work, homework and time management skills, relationships with others, social and emotional skills, attitude, self-esteem and behavioural self-management.

Contact Details

If you have any concerns about your child having a special educational need, please contact our Special Educational Needs Coordinator.



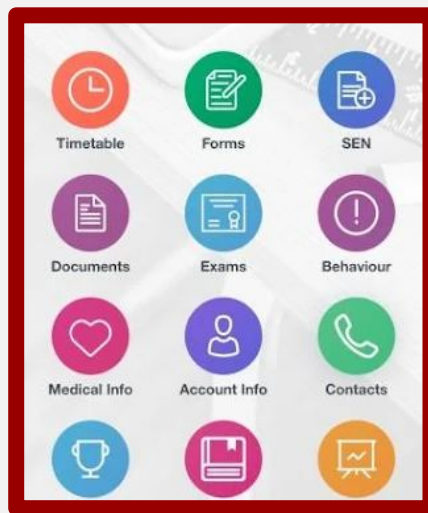
Ms N Laszkowicz
SENDCO

n.laszkowicz@hallcross.elp.org.uk

EDULINK

EDULINK ONE - PARENTAL APP

Hall Cross Academy has linked up with Edulink One to offer parents/carers a direct access to their child's data. This innovative app is available to download on your phone or access via a web browser.



What is there for parents/carers?

It allows the school to communicate directly with parent/carer about their child. More crucially, it allows the parent access all essential pupil information such as: attendance and timetable as well as providing a quick and easy way to receive messages from school or update your contact details.

How to access Edulink One?

On the web browser, go to: www.edulinkone.com or alternatively use your phone's app store look for Edulink One and login with the username and password that has been sent via email. If you have any issues with logging in please contact:

atu@hallcrossacademy.co.uk

Scan the QR code to sign up:



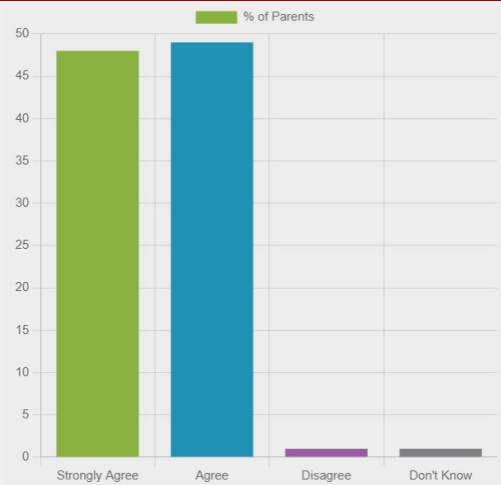
PARENT VOICE

Below are the live results from our parent feedback surveys at every Parents' Evening. As a parent, you have the chance to influence this data by taking part in one of our surveys. During any of our Parents' Evenings feel please free to pick up one of our iPads and give us your feedback on how you feel we are doing.

<https://hallcrossacademy.co.uk/parents/parent-voice-data/>

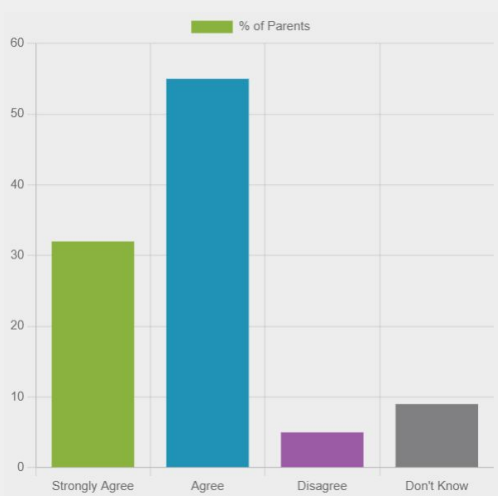
My child is happy at this school

785 parents surveyed



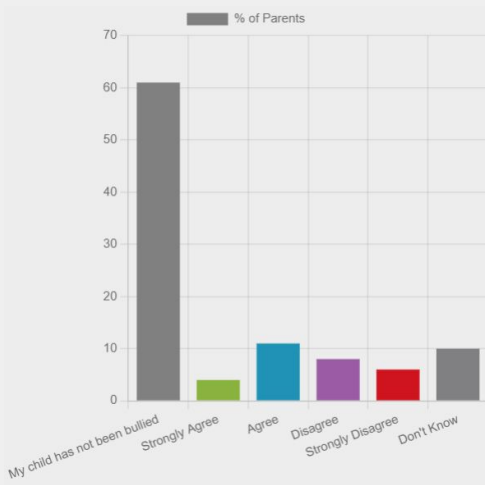
The school supports my child's personal development

768 parents surveyed



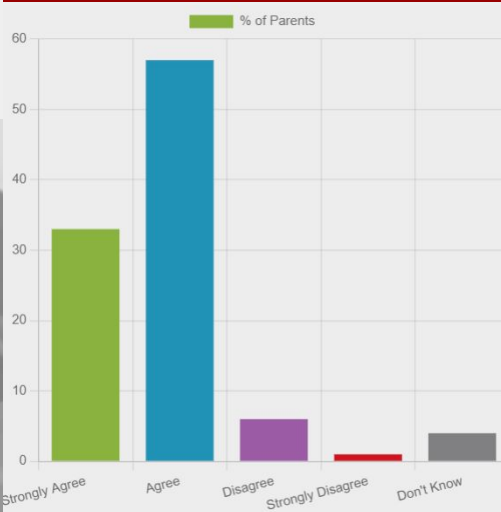
My child has been bullied and the school dealt with the bullying quickly and effectively

779 parents surveyed



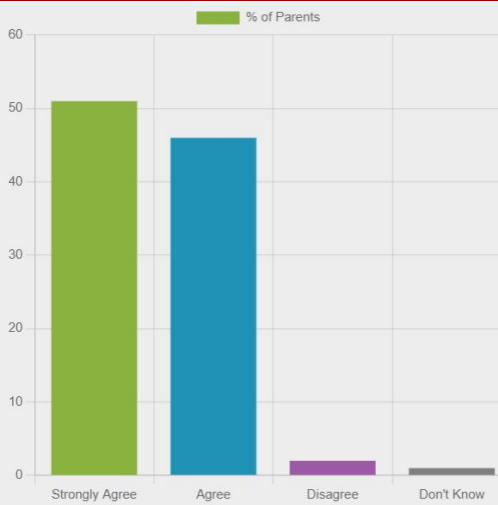
The school makes sure its pupils are well behaved

784 parents surveyed



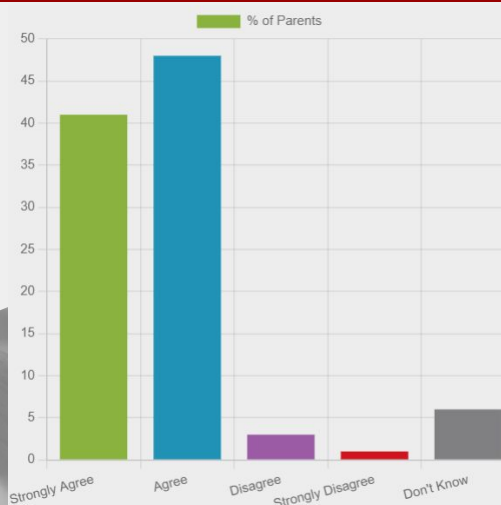
My child feels safe at this school

782 parents surveyed



My child can take part in clubs and activities at this school

771 parents surveyed



TERM DATES

JULY 2025

Summer Holidays - 21st July until 31st August 2025

September 2025

Training Day - 26th September 2025

October 2025

Year 6 Open Evening - 16th October 2025 4:00 pm - 6:30 pm

Training Day - 24th October 2025

October Half Term - 27th October - 31st October 2025

November 2025

Training Day - 3rd November 2025

Year 12 Open Evening - 27th November 2025 4:00 pm - 7:00 pm

December 2025

Christmas Holidays - 22nd December 2025 - 2nd January 2026

TERM DATES

January 2026

Training Day - 5th January 2026

February 2026

February Half Term - 16th February - 20th February 2026

March 2026

Easter Holidays - 30th March - 10th April 2026

May 2026

Bank Holiday - 4th May 2026

May Half Term - 25th May - 29th May 2026

June 2026

Training Day - 29th June 2026

July 2026

Training Days 17th July - 20th July 2026

Summer Holidays - 21st July 2026

FREQUENTLY ASKED QUESTIONS

We have collated a few of the frequently asked questions that come up during the transition process. See some of the questions and answers below. If you have a question that isn't below, please feel free to contact us using the school website:

<https://hallcrossacademy.co.uk/contact-us/>

What if my child needs support with transition?

If you think your child needs more support please discuss this with your child's primary school. We work very closely with all of our feeder schools and they make recommendations to us where additional support may be required

Where do I get school uniform and PE kits from?

Uniform and PE kit requirements are detailed on our website and in the prospectus, items can be purchased via the link in the uniform area here or in person at Cliffs in Doncaster.

How much homework do students get?

Homework is set regularly and ranges from worksheets and web based activities to half-termly projects. The aim of all of these is to develop students' independence and is only set when it benefits students' learning.

What do i do if my child receives support for a Special Educational Need at primary school?

Our SENDCO and Year 7 Manager is in regular contact with primary schools and they ensure that any relevant information is passed between schools. If there is anything you think we should know directly please contact us with your child's name and date of birth.

FREQUENTLY ASKED QUESTIONS

What do student need to bring to school?

Students will need a bag, a pencil case containing Blue, Black and Green pens, a pencil, a ruler, a scientific calculator, a pencil sharpener and an eraser. Students will also need to bring their PE Kit on specific days.

Will my child be in classes with their friends from primary school?

All classes will be made up of students from all of our feeder schools. Most teaching groups are mixed but some groups are put together based on ability. Don't worry if your child is not with their friends from previous schools they will make lots of new friends.

Who do I speak to if I am worried or concerned about anything?

If anything concerns you please do not hesitate to contact us. You can speak to any member of staff but your first port of call should be the Year 7 Year Manager, Karon Briggs or the Key Stage Three Phase Leader, Paul Tyrer. You will meet Karon and Paul in September. <https://hallcrossacademy.co.uk/contact-us/>

Can students bring mobile phones into school?

Yes. At Hall Cross Academy we think it is important to harness the power of technology in our learning. We have expectations in place to ensure that mobile phones don't get in the way of progress and we ask students to use them appropriately. It is important to note that mobile phones remain the responsibility of the owner at all times.

FREQUENTLY ASKED QUESTIONS

What does the school day look like?

The school day starts at 08:35 and finishes at 15:10. In this time students have 5 lesson periods and break and lunchtime. For timings and more information please see the prospectus on the school website

Does Hall Cross Academy have a Breakfast Club?

Students are able to purchase some breakfast before school but can also purchase snacks at breaktime and lunchtime. There are a variety of options available and the menu changes regularly.

What extracurricular activities are available?

Hall Cross Academy has a comprehensive calendar of extracurricular activities for students to get involved in, these range from academic groups like science club or language club, to sports groups and performing arts groups. If students want to stay at school just to do homework, the library is open until 4pm.

Can my child wear jewellery?

Jewellery is not permitted, except when related to religious observance, in which case it should be worn under the uniform. Piercings are explicitly not allowed.